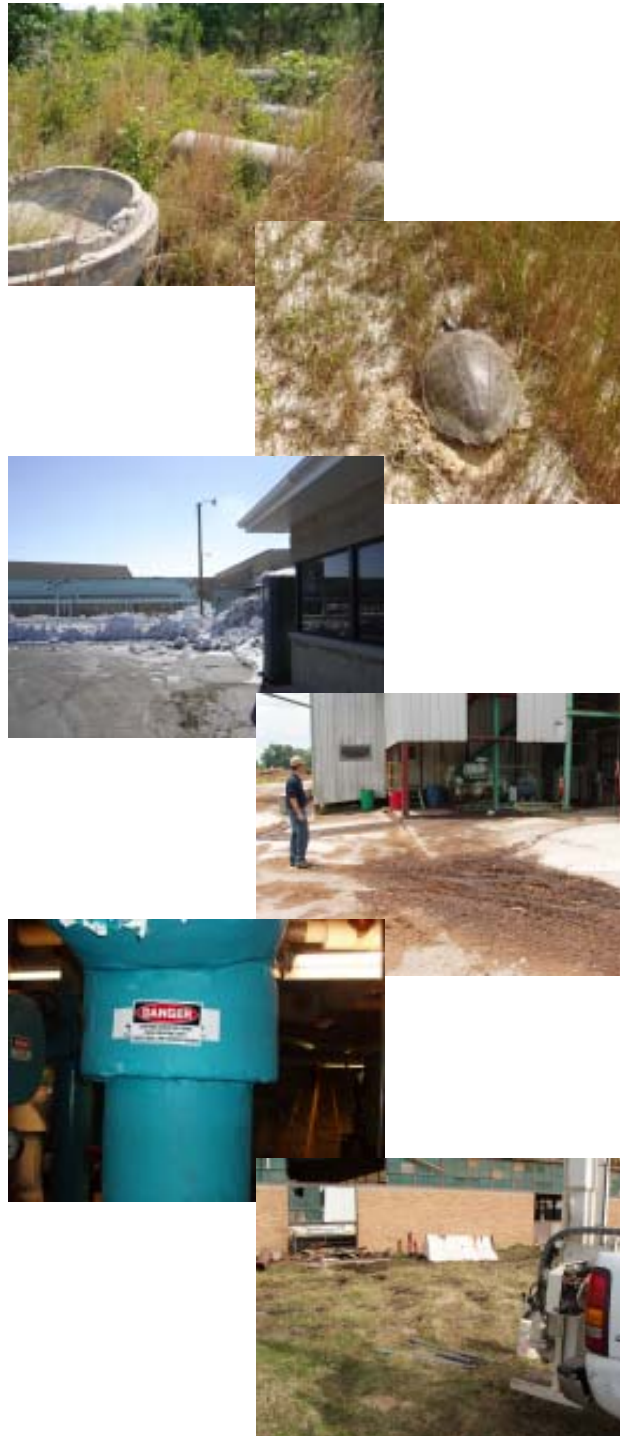


Conversion Technology, Inc. (CTI) is a full service environmental, health, safety and engineering firm. We have conducted over 100 Phase I environmental site assessments for properties and facilities in a variety of industries in over a dozen states. Many of these Phase I assessments involved sites with industrial activity and contaminated sites requiring expert environmental knowledge to properly assess the site. CTI also has vast experience in conducting detailed Phase II investigations and managing remedial activities where required.

CTI's environmental site assessments are conducted and prepared in conformance with American Society for Testing and Materials (ASTM) Practice E1527-05 and 40 CFR, Part 312 Standards and Practices for All Appropriate Inquiries; however, our assessments are more than checklists completed by junior personnel. We provide our client the information on the environmental status of the business or real estate property so rational judgments can be made as to the environmental risks inherent in any loan. CTI is also willing to modify the scope of the assessments to meet the client's needs.

The purpose of the Phase I environmental site assessment is to assess past and present land use practices, site operations and conditions, and to identify the potential presence of hazardous substances and soil and/or groundwater contamination at the site.



The Scope of Services in a Phase I environmental site assessment includes:

- A reconnaissance of the site and its vicinity
- A compilation of the property history, including review of previous environmental reports for the subject property
- A file review at relevant government agencies
- An agency list search of contaminated and environmentally sensitive facilities located within the radii required by E1527-05
- A review of property deed information to determine the presence of environmental liens
- A visual asbestos, lead based paint and PCB survey
- A review of survey map for radon zones
- A summary of our finding, conclusion and recommendations

If you have any questions or would like to discuss our services in further detail, please contact us at (770) 263-6330 or via email at cti@conversiontechnology.com.